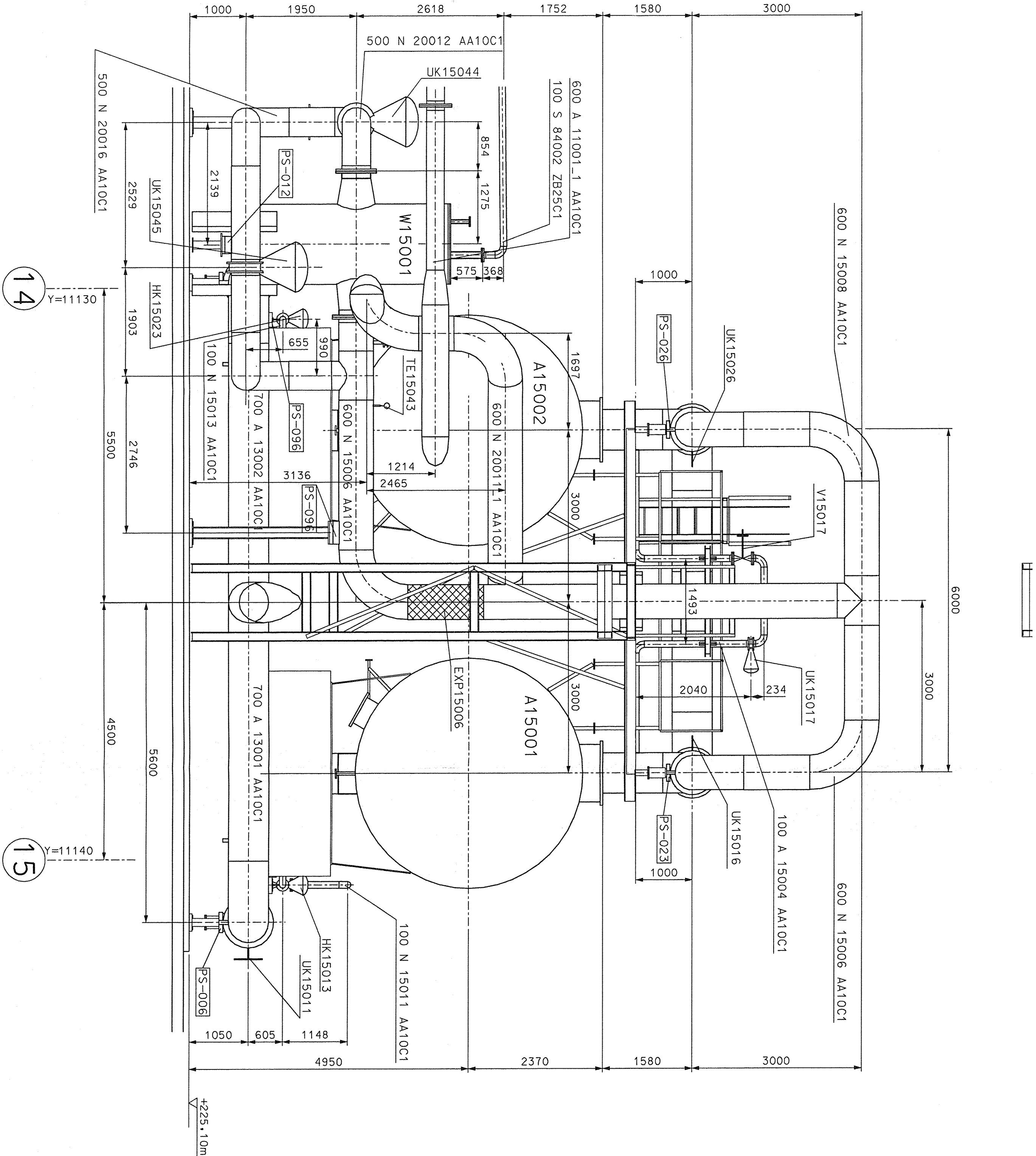
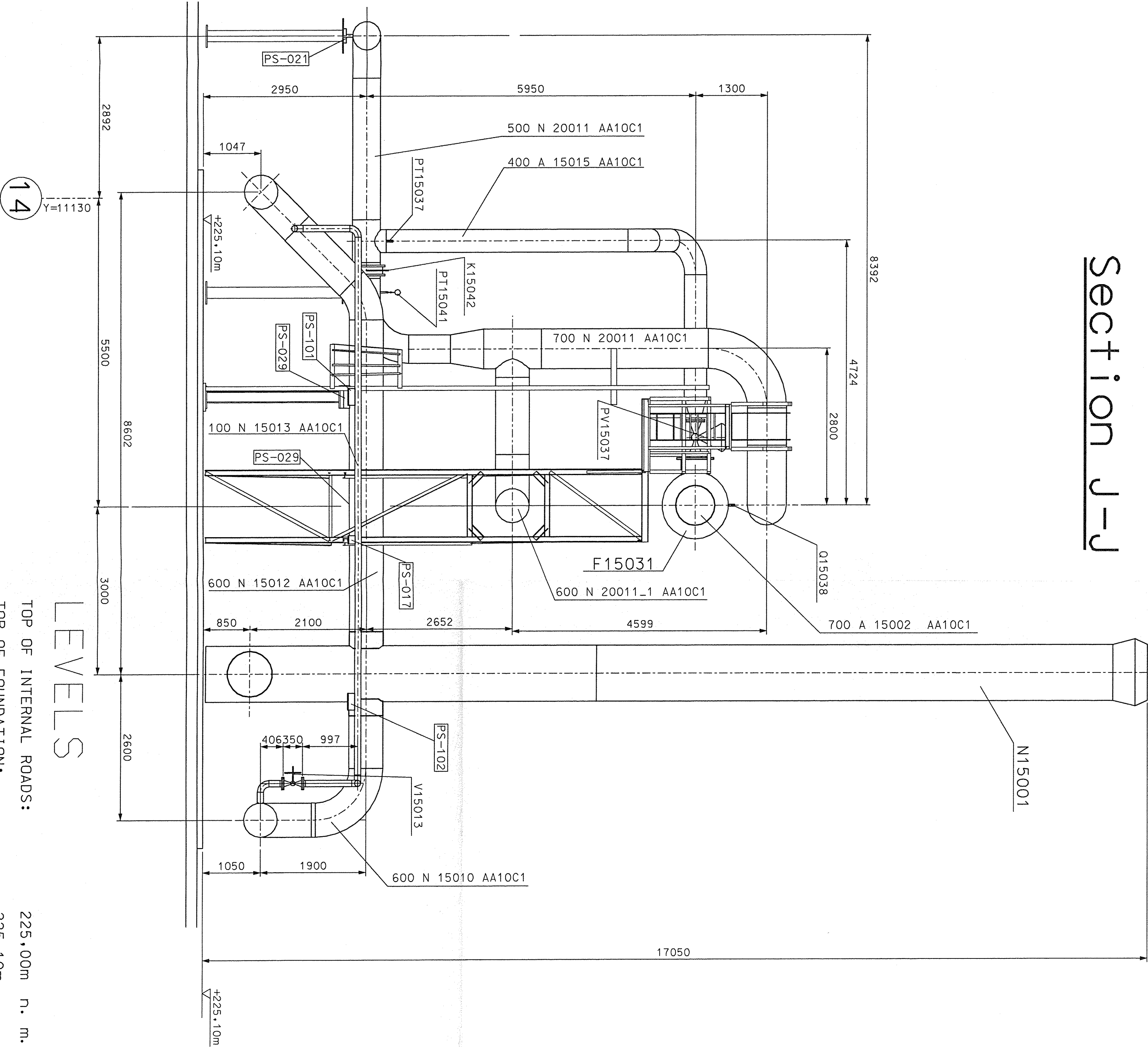


Section I-I



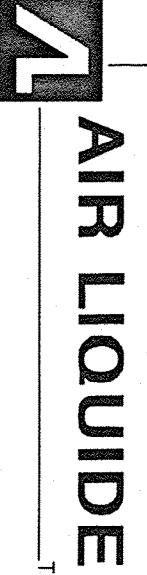
Section J-J



LEVELS

TOP OF INTERNAL ROADS: 225.00m n. m.  
TOP OF FOUNDATION: 225.10m  
BOTTOM OF STEEL STRUCTURE: 225.15 = ±0.00

Project No	9050300	Rev	00
Drawn	2005/06/20	Checked	2005/06/20
Scale	1:50	Scale	1:50
Reference	INSTALLATION DRAWING	Reference	INSTALLATION DRAWING
Sheet	17	Sheet	17
Drawn	79287823	Drawn	79287823
Rev	00	Rev	00



REV.	DATE	DESCRIPTION	REV.	DATE	DESCRIPTION
1	2005/06/20	AR	1	2005/06/20	AR
2	2005/06/20	AR	2	2005/06/20	AR
3	2005/06/20	AR	3	2005/06/20	AR
4	2005/06/20	AR	4	2005/06/20	AR
5	2005/06/20	AR	5	2005/06/20	AR
6	2005/06/20	AR	6	2005/06/20	AR
7	2005/06/20	AR	7	2005/06/20	AR
8	2005/06/20	AR	8	2005/06/20	AR
9	2005/06/20	AR	9	2005/06/20	AR
10	2005/06/20	AR	10	2005/06/20	AR
11	2005/06/20	AR	11	2005/06/20	AR
12	2005/06/20	AR	12	2005/06/20	AR
13	2005/06/20	AR	13	2005/06/20	AR
14	2005/06/20	AR	14	2005/06/20	AR
15	2005/06/20	AR	15	2005/06/20	AR
16	2005/06/20	AR	16	2005/06/20	AR
17	2005/06/20	AR	17	2005/06/20	AR
18	2005/06/20	AR	18	2005/06/20	AR
19	2005/06/20	AR	19	2005/06/20	AR
20	2005/06/20	AR	20	2005/06/20	AR
21	2005/06/20	AR	21	2005/06/20	AR
22	2005/06/20	AR	22	2005/06/20	AR
23	2005/06/20	AR	23	2005/06/20	AR
24	2005/06/20	AR	24	2005/06/20	AR
25	2005/06/20	AR	25	2005/06/20	AR
26	2005/06/20	AR	26	2005/06/20	AR
27	2005/06/20	AR	27	2005/06/20	AR
28	2005/06/20	AR	28	2005/06/20	AR
29	2005/06/20	AR	29	2005/06/20	AR
30	2005/06/20	AR	30	2005/06/20	AR
31	2005/06/20	AR	31	2005/06/20	AR
32	2005/06/20	AR	32	2005/06/20	AR
33	2005/06/20	AR	33	2005/06/20	AR
34	2005/06/20	AR	34	2005/06/20	AR
35	2005/06/20	AR	35	2005/06/20	AR
36	2005/06/20	AR	36	2005/06/20	AR
37	2005/06/20	AR	37	2005/06/20	AR
38	2005/06/20	AR	38	2005/06/20	AR
39	2005/06/20	AR	39	2005/06/20	AR
40	2005/06/20	AR	40	2005/06/20	AR
41	2005/06/20	AR	41	2005/06/20	AR
42	2005/06/20	AR	42	2005/06/20	AR
43	2005/06/20	AR	43	2005/06/20	AR
44	2005/06/20	AR	44	2005/06/20	AR
45	2005/06/20	AR	45	2005/06/20	AR
46	2005/06/20	AR	46	2005/06/20	AR
47	2005/06/20	AR	47	2005/06/20	AR
48	2005/06/20	AR	48	2005/06/20	AR
49	2005/06/20	AR	49	2005/06/20	AR
50	2005/06/20	AR	50	2005/06/20	AR
51	2005/06/20	AR	51	2005/06/20	AR
52	2005/06/20	AR	52	2005/06/20	AR
53	2005/06/20	AR	53	2005/06/20	AR
54	2005/06/20	AR	54	2005/06/20	AR
55	2005/06/20	AR	55	2005/06/20	AR
56	2005/06/20	AR	56	2005/06/20	AR
57	2005/06/20	AR	57	2005/06/20	AR
58	2005/06/20	AR	58	2005/06/20	AR
59	2005/06/20	AR	59	2005/06/20	AR
60	2005/06/20	AR	60	2005/06/20	AR
61	2005/06/20	AR	61	2005/06/20	AR
62	2005/06/20	AR	62	2005/06/20	AR
63	2005/06/20	AR	63	2005/06/20	AR
64	2005/06/20	AR	64	2005/06/20	AR
65	2005/06/20	AR	65	2005/06/20	AR
66	2005/06/20	AR	66	2005/06/20	AR
67	2005/06/20	AR	67	2005/06/20	AR
68	2005/06/20	AR	68	2005/06/20	AR
69	2005/06/20	AR	69	2005/06/20	AR
70	2005/06/20	AR	70	2005/06/20	AR
71	2005/06/20	AR	71	2005/06/20	AR
72	2005/06/20	AR	72	2005/06/20	AR
73	2005/06/20	AR	73	2005/06/20	AR
74	2005/06/20	AR	74	2005/06/20	AR
75	2005/06/20	AR	75	2005/06/20	AR
76	2005/06/20	AR	76	2005/06/20	AR
77	2005/06/20	AR	77	2005/06/20	AR
78	2005/06/20	AR	78	2005/06/20	AR
79	2005/06/20	AR	79	2005/06/20	AR
80	2005/06/20	AR	80	2005/06/20	AR
81	2005/06/20	AR	81	2005/06/20	AR
82	2005/06/20	AR	82	2005/06/20	AR
83	2005/06/20	AR	83	2005/06/20	AR
84	2005/06/20	AR	84	2005/06/20	AR
85	2005/06/20	AR	85	2005/06/20	AR
86	2005/06/20	AR	86	2005/06/20	AR
87	2005/06/20	AR	87	2005/06/20	AR
88	2005/06/20	AR	88	2005/06/20	AR
89	2005/06/20	AR	89	2005/06/20	AR
90	2005/06/20	AR	90	2005/06/20	AR
91	2005/06/20	AR	91	2005/06/20	AR
92	2005/06/20	AR	92	2005/06/20	AR
93	2005/06/20	AR	93	2005/06/20	AR
94	2005/06/20	AR	94	2005/06/20	AR
95	2005/06/20	AR	95	2005/06/20	AR
96	2005/06/20	AR	96	2005/06/20	AR
97	2005/06/20	AR	97	2005/06/20	AR
98	2005/06/20	AR	98	2005/06/20	AR
99	2005/06/20	AR	99	2005/06/20	AR
100	2005/06/20	AR	100	2005/06/20	AR